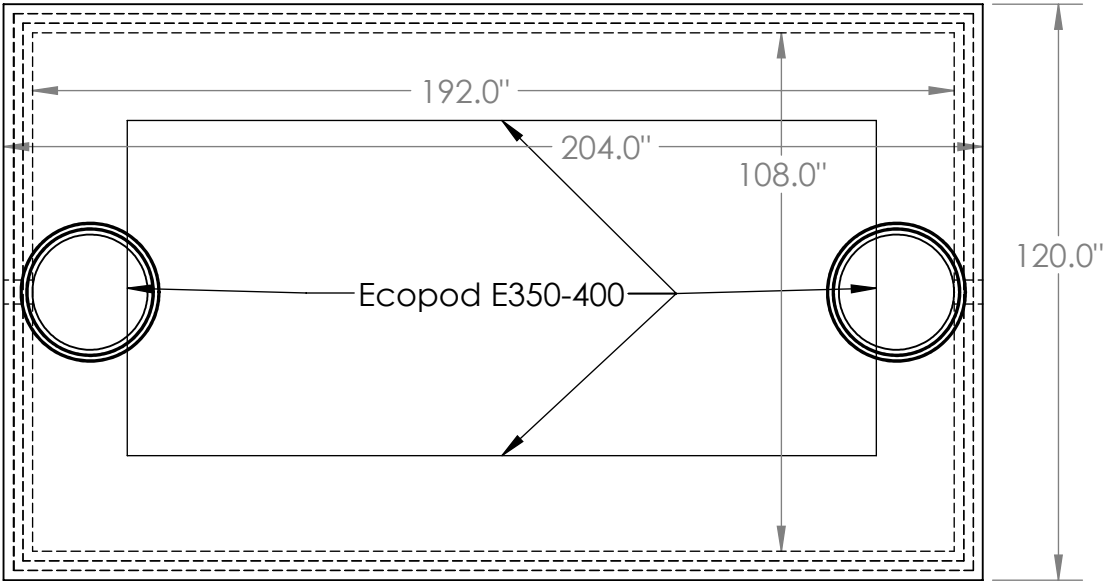
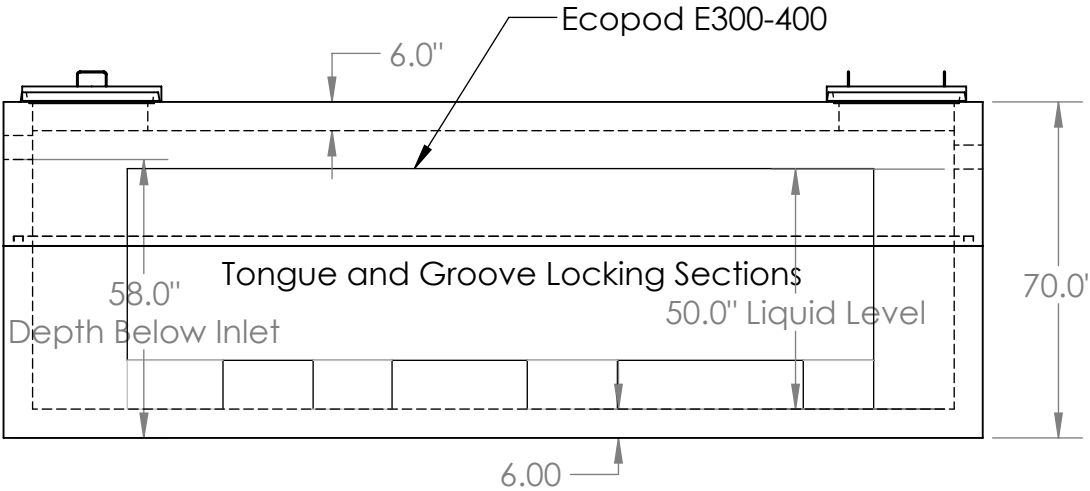


# Dalmaray Concrete Products Inc.

## Tank Model 4300 Tank

Model 4300 Gallon ATU Tank  
To Fit High Strength Ecopod Units

4310 gal septic  
4490 gal holding  
89.8 gal/in



**DIMENSIONS:**

- LENGTH - 204"
- WIDTH - 120"
- HEIGHT - 68"
- BELOW INLET - 56"
- BOTTOM SECTION WEIGHT - 23400 lb.
- TOP SECTION WEIGHT - 19900 lb.
- MAX DEPTH OF BURY 108"

# Dalmaray Concrete Products Inc.

405 S. Arch St.  
Janesville, WI 53548  
(608)-752-6507  
Toll Free: (888)-222-4541  
Fax: (608)-752-5671  
www.dalmarayconcreteproducts.com  
sales@dalmarayconcreteproducts.com